



vaellan®
VEHICLES

USER & SERVICE MANUAL
GEN 2

CONTENT

1	Warning Signs
1	Safety Instructions
3	Structure And Functioning Of The Vehicle
3	Intended Use Of The Vehicle
4	Introduction
7	Snow & Snow+ Quick Guide
8	Wheeler Quick Guide
9	Assembling The Track Unit (Snow & Snow+)
10	Engine/Track
11	Frame Assembly
12	Attaching the Engine/Track to The Frame
13	Connection Of Wiring Harness
14	Battery
15	Other Options
16	Kill Switch
17	Precautions Before Starting The Engine
18	Starting And Stopping The Engine
20	Starting A New Engine
21	Storing The Unit
22	Driving And Operating a Vaellan vehicle
23	Operating In Extreme Conditions And Towing
24	Selecting The Maximum Speed By Changing Gears
24	Changing The Sprocket
25	Wheeler Options And Combinations
	Fitting Wheels
	Fitting Rear Axle
28	Maintenance
	Perform The Following Steps Daily
	Perform The Following Steps After Every 10 Hours Of Operation
	Perform The Following Steps After Every 50 Hours Of Operation
	Track Tension Adjustment
	Maintenance Measures To Be Taken At The End Of The Driving Period
30	Technical Data
31	Warranty
34	Disposal Of The Product

MUST READ BEFORE OPERATING

IMPORTANT INFORMATION ABOUT VAELLAN VEHICLES

This manual will help you understand the features of the new Vaellan vehicle and how to use the vehicle safely. This manual contains all necessary safety instructions. This manual also tells you how to maintain your vehicle.

IMPORTANT

This vehicle is designed for off-road use only. Using the vehicle on public roads is illegal and dangerous. Always check your regional laws. The vehicle should be insured and/or registered if it is used outside a closed area.

IMPORTANT

Failure to read and non-comply with the warnings and notices in this manual may result in serious personal injury or even death.

Always read the following notices carefully:

WARNING: Failure to read and follow this manual can result in very serious injury or even death to the user, bystander, or person repairing the vehicle.

NOTICE: This includes additional information about the vehicle.

WARNING SIGNS

Read, understand, and abide by all warnings in this manual and warning signs attached to the vehicle and accessories. Warnings contain important safety information. Never remove any stickers from your vehicle. If a sticker wears or comes off, ask your dealer for a new sticker.

SAFETY INSTRUCTIONS

The Vaellan vehicle is not a toy and it can be difficult to operate without proper training. Vaellan vehicles behave differently from other vehicles such as ATVs, motorcycles and cars. An incident may occur suddenly, when turning, driving on a slope, or driving over obstacles unless you assess the situation properly. Serious injury or death may result if you do not follow the following instructions:

- Read this manual and all warning signs carefully and abide by the driving instructions described.
- Never drive or allow others to drive the Vaellan vehicle under the influence of alcohol, drugs or narcotics, or if you feel unstable.
- Always wear a helmet and protective gear while driving.
- The tethered kill switch must always be firmly attached to your clothes before starting the vehicle.
- Always start the vehicle without the chain on the sprocket.
- The vehicle may only be driven by persons over 18 years of age.
- Check any local laws for Wheelers and Snow/Snow+. Always follow local laws.
- Never carry or haul a passenger with a Vaellan vehicle. The vehicle is intended for one person only.
- Never drive a Vaellan vehicle on roads or other public roads. It is intended for flat-surfaces and closed areas only.
- Do not operate Vaellan vehicle near other people.
- Do not start the engine if it's not fully assembled in the Vaellan unit.
- Do not remove or install any parts or assemblies while the engine of the Vaellan vehicle is running.
- Never drive too fast for your skills or conditions. Always drive carefully, especially in unfamiliar terrain. Always be vigilant while operating the vehicle. When driving on ice, always make sure that the ice is strong enough to carry the weight of the vehicle and driver. In addition make sure that there are no grooves, ditches or streams in the route. Do not drive so far into the terrain that you will not be able to walk back.

- Practice driving at slow speeds and on flat surfaces. Drive slowly on slippery surfaces such as ice, and be careful not to lose control of the vehicle.
- Always follow the correct procedure for turning. Practice turning at slow speeds before turning at higher speeds. When turning at higher speeds, the Vaellan vehicle may tip over. Always maintain a safe speed.
- Always keep both hands on handles and both feet on foot rests while driving. Always keep your feet inside the Vaellan vehicle while driving.
- Always inspect your Vaellan vehicle before driving to make sure it is safe to drive.
- Always follow the maintenance instructions.
- Never attempt any tricks or jumps while operating a Vaellan vehicle.
- Never exceed the specified load capacity of the Vaellan vehicle. The load must be properly loaded and securely fastened. Reduce speed as you pull the load behind you. Do not use other than purposely built for Vaellan trailers or sleds.
- Never alter the vehicle or use third-party options.
- Do not tilt the engine beyond the tilt angle specified in the specifications to prevent damages to engine.
- Do not touch the engine exhaust or muffler after use. It may cause injury.
- Never use the Vaellan vehicle on slopes.
- Check the terrain carefully before driving. Never drive over rocks, stumps, fallen trees or areas that you are unfamiliar with. Sharp objects such as sticks or rocks can damage the track or other parts of the vehicle.
- Always use original spare parts. Other replacement parts may not be dimensioned to meet the required characteristics and may cause damage which voids the warranty.
- Always be careful when stopping the vehicle, as the vehicle may move due to difficult terrain. Learn safe handling in case of track or tire slipping.
- Always switch off the engine before refueling your Vaellan vehicle (applies to the Honda engine versions). Be careful not to spill fuel, the fuel will melt paint and plastics. Fuel vapors should not be inhaled. Do not start or operate the engine indoors.
- The Vaellan cover hood is made only for snow, ice or below freezing conditions. Never use the cover hood during the summer, as the engine may overheat.
- Always make sure all bolts, fixing points and other handles are firmly tightened correctly before operating the vehicle. Make sure to attach the main frame bolts firmly before operating Vaellan Snow or Vaellan Snow+.

STRUCTURE AND FUNCTIONING OF THE VEHICLE

The vehicle is built on a track frame or rear axle on which the motor is mounted. The frame is made from metal pipes that are attached to the track frame or rear axle with hook-like fasteners. The unit consist of multiple different pieces that can be attached to each other easily. Notice that you can drive the vehicle with optional wheels, tracks, skis, or a combination of wheels and track. If you are uncertain on how to assemble the unit correctly please contact your local dealer or importer.

Power is transmitted to the track/wheels by drive chain from the motor. The centrifugal clutch is attached to the engine making the driving experience comfortable. Speed can be controlled with the thumb throttle. The brake is a hydraulic braking system and is operated from the left handlebar. Always turn on the parking brake when vehicle is in full stop. Never leave the vehicle unattended while the engine is running.

INTENDED USE OF THE VEHICLE

Vaellan vehicles as intended for flat surfaces and can be driven in snow, ice and terrain. They are not intended to be operated in deep snow. Vehicles are not intended for doing tricks (such as jumps). Vehicles are not intended to be attached to accessories that are not designed by Vaellan. The vehicle is designed to operate at temperatures of + 40°C to (-20°C) or 104°F - (-4°F) and altitudes below 1500m/4900ft (above sea level). The vehicle can be driven on snow-free terrain, if it is fitted with a set of Vaellan wheels. Driving in snow-free terrain on a track model can wear out parts faster if driving on hard or sandy surfaces. While driving in terrain (with no snow), make sure that stones do not hit any of the critical parts of the vehicle (e.g. chain or frame parts). The vehicle contains parts that will wear over time and are not included in the warranty. These wear parts need to be replaced over time due to use. Do not drive the vehicle with damaged parts.

WARNING

Vaellan vehicles shouldn't be driven on public roads or public areas. Always check your local laws.

WARNING

Vaellan vehicles shouldn't be driven on thin ice.

NOTICE

Don't drive Vaellan vehicles at low speeds for extended periods of time (<1 minute), as this causes the centrifugal clutch plates to overheat and results in rapid wear of the friction plates . This is not covered by the warranty.

INTRODUCTION

Vaellan vehicles are designed to be as simple as possible in both structure and in use. The use of a Vaellan vehicle requires compliance with the owner's and service manual. Each user must read and understand the operating manual before using Vaellan vehicle. Vaellan vehicles can easily be transported in the truck of a car.

CONFIGURATION

WHEELER

MID FRAME



FRONT FRAME



SNOW &
SNOW+

MID FRAME



FRONT FRAME



COMBO &
COMBO+

MID FRAME



FRONT FRAME



THE FOLLOWING PICTURE

RATIONS

HONDA
ENGINE



REAR AXLE, GEARBOX
AND WHEELS



HONDA
ENGINE



SHORT TRACK
LONG TRACK



SKIS



HONDA
ENGINE



SHORT TRACK
LONG TRACK

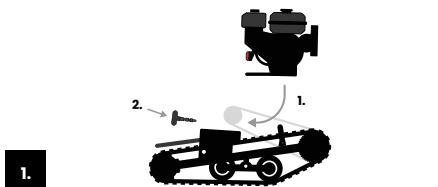


FRONT WHEELS



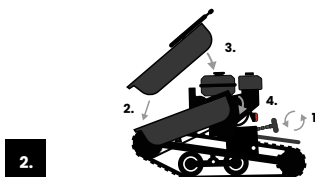
SNOW & SNOW+

QUICK GUIDE



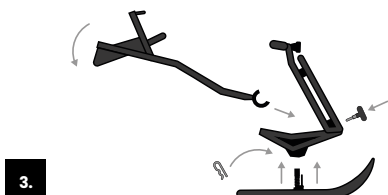
1.

Place the motor between the guide rails on the motor stand. Push the threaded rod through the hole in the engine mount. Place the chain on the sprockets and fasten the engine tensioner T-handle.



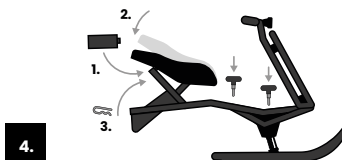
2.

Tighten the chain by turning the T-handle until the chain feels firm. Do not over tight it (movement should be approximately 10mm from center point). Install the chain guard and tighten it with the rubber collar. Driving without chain guard is prohibited and may cause injury.



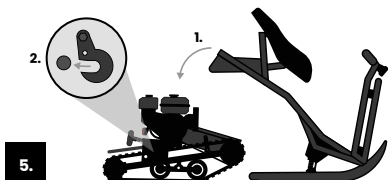
3.

Lift the handlebar into upright position and lock it in place with the T-handle. Attach the mid frame onto the front frame. Attach the skis to their respective holes and secure them in place with a short pin.



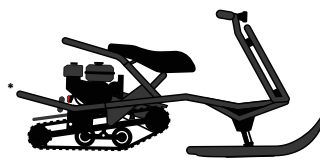
4.

Secure the mid frame and front frame with the two T-handles. Insert the battery under the bench (battery terminals facing up). Secure battery with rubber collar. Place the bench on top of the battery and secure it with the long pin. Place the battery cable over both bench frame tubes and attach it to the red socket. Attach wire and brake cable.



5.

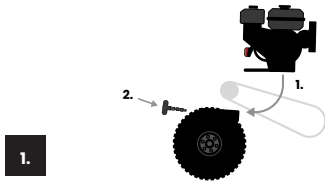
Connect the frame to the track package by lowering the frame hooks into the pins in the track package. Please use the bolt on the hooks to fully secure the frame in place to prevent any damages.



Always read the operating and maintenance instructions before use. For more information, see www.vaellan.com/support. If necessary, contact your local dealer or Vaellan Support.

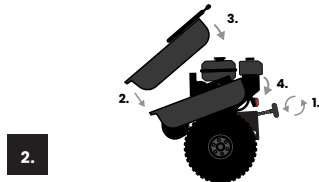
* Vehicle in the picture may have optional accessories.

WHEELER QUICK GUIDE



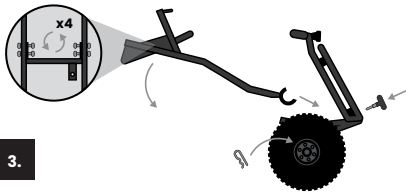
1.

Install the parts on flat and hard surface. Support the wheel package and prevent the wheels from spinning. Place the motor between the guide rails on the motor stand. Push the threaded rod through the hole in the engine mount. Place the chain on the sprockets and fasten the engine tensioner T-handle.



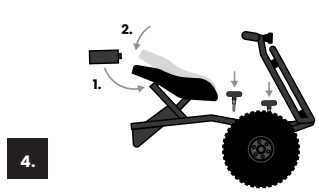
2.

Tighten the chain by turning the T-handle until the chain feels firm. Do not over tight it (movement should be approximately 10mm from center point). Install the chain guard and tighten it with the rubber collar. Driving without chain guard is prohibited and may cause injury.



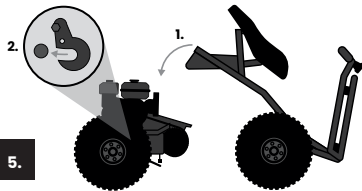
3.

Lift the handlebar into upright position and lock it in place with the T-handle. Attach a crossbar to the mid frame with 4 M2 bolts. Attach the mid frame onto the front frame. Attach the skis to their respective holes and secure them in place with a short pin.



4.

Secure the mid frame and front frame with the two T-handles. Insert the battery under the bench (battery terminals facing up). Secure battery with rubber collar. Place the bench on top of the battery and secure it with the long pin. Place the battery cable over both bench frame tubes and attach it to the red socket. Attach wire and brake cable.



5.

Connect the frame to the motor package by lowering the frame hooks into the pins in the motor package. Please use the bolt on the hooks to fully secure the frame in place to prevent any damages.

NOTICE! Axle and the motor package need to be level while connecting.



6.

1. Attach motor packages right side support to the frame with a bolt. 2. Attach a bar to the brake cylinder. 3. Attach gearshifter to its place in the crossbar. Always read the operating and maintenance instructions before use. For more information, see www.vaellan.com/support. If necessary, contact your local dealer or Vaellan Support.

* Vehicle in the picture has optional accessories.

ASSEMBLING THE TRACK UNIT (SNOW & SNOW+)

NOTICE

Do not use excessive force when tightening the connection screws.

Be sure to follow the assembly instructions and other instructions in the manual. Failure to do so will shorten the lifespan of the vehicle and voids the warranty.

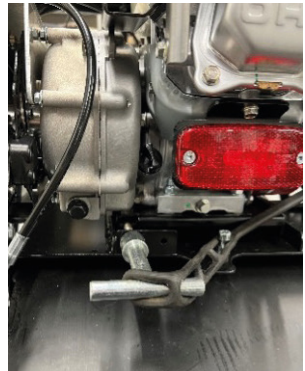
Vaellan vehicles can be assembled and dismantled for storage and transportation. It consists of track and engine part and the frame parts. You need to assemble these units separately and attach them together.

ENGINE/TRACK

1. Place the motor between the guide rails on the motor stand by pushing from front to back. Notice the engine threaded rod goes through the hole.
2. Add chain cover and test engine before attaching the chain.
3. Place the chain on the motor sprocket and on the track frame sprocket
4. Push the motor between the rails so that the chain tightens.
5. Install the chain cover in its proper place. Testing the engine and driving without chain cover is prohibited. Chain cover is secured with rubber strap.
6. Tighten the chain for proper tension.
7. Rotate the engine T-handle until the chain is able to move 15mm in the middle of the chain. Do not overtighten the chain.
8. After chain is tensioned you can lock it into place with rubber strap.

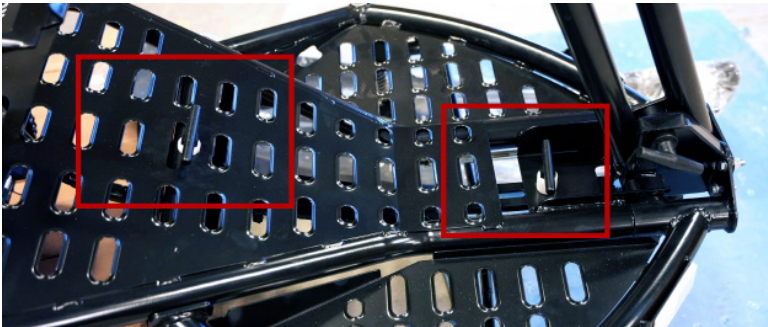
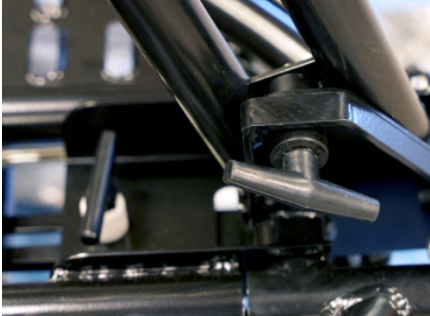
CAUTION

Do not tighten the chain with tools. The new chain may stretch on first use. Check the chain tension after the first runs.



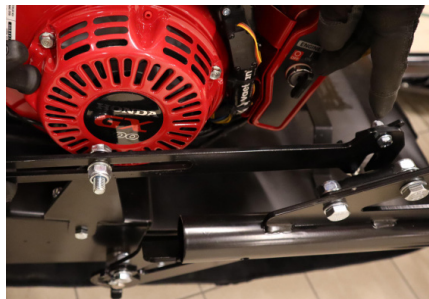
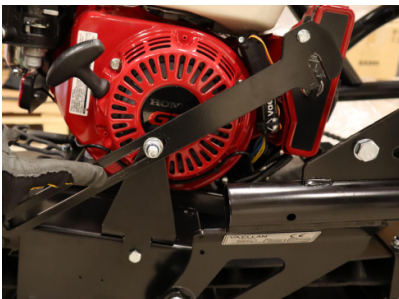
FRAME ASSEMBLY

1. Place the front frame on the ground and raise the handlebar.
2. Secure the handlebar in place with the T-handle on the bottom of the handlebar.
3. Lift the mid frame on to the front frame.
4. Secure the mid frame and front frame firmly with two T-handles.
5. Attach the skis to the appropriate holes.
6. Secure the skis by pushing them down and check that skis lock into place.



ATTACHING THE ENGINE/TRACK TO THE FRAME

1. Connect the frame to the track by lowering the hooks of the mid frame.
2. Connect the mid frame the track with hooks (notice the locking hole).
3. Secure the frame hooks with locking bolts . Do not operate the unit without the locking bolts.
4. Attach the swing limiter to the mid frame, lock it to the mid frame with the locking lever.
5. Check that the swing limiter moves freely on its rail. Loosen the adjusting nut if necessary.



CONNECTION OF WIRING HARNESS

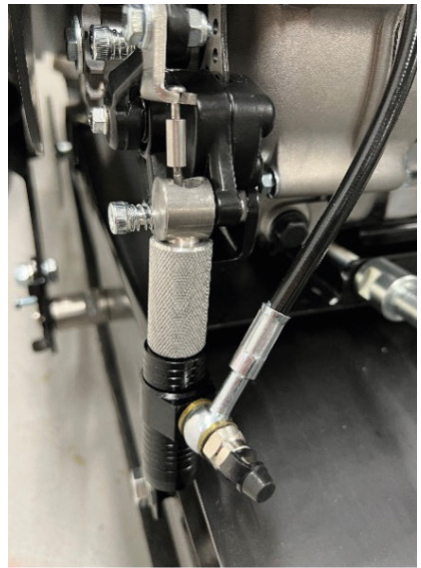
ATTENTION

Thread the brake cylinder and electric wire connector through the hole in the mid frame before connecting them.

NOTICE

The brake cylinder needs to be stored under the engine cover hood when not in use. It should always be clean and tested before starting the engine.

1. Attach the electric wire connector to the connector on the motor. The electrical connector is placed in corresponding grooves and is rotated into place.
2. Attach the brake cylinder to the brake caliper next to the gear case.
3. Attach the brake cylinder to the brake caliper. Insert the brake cylinder pin into the brake caliper groove.
4. Check that the brake returns to normal and does not drag (adjust if necessary with the aluminum adjustment nut).
5. The brake cylinder needle should move about 12mm.



BATTERY

OPTION

The Vaellan battery charger is a convenient way to charge the Vaellan battery.

- The battery is installed under the seat and tightened into place with the rubber strap.
- Install battery tight enough to prevent the battery from moving.
- If the battery rubs into metal structures, the shell may burst which can result in corrosive battery acid leaking out.
- Always remember to store the battery upright and fully charged.
- The battery may discharge if left out for a long period of time.



OTHER OPTIONS

The engine protection bars and the front grab are mounted with the provided bolts and nuts (arches cannot withstand sitting).



The snow flap is mounted with the supplied bolts.



The towing hitch is mounted with the supplied bolts. Snow/Snow + and Wheeler have their own separate towing hitches.



KILL SWITCH

- Connect the end of the kill switch tether to the mount in the handlebar.
- The kill switch tether must be installed each time the engine is started.
- The engine turns off when the clip is pulled off.
- Always attach the kills switch tether to your clothes before starting the vehicle.
- Do not operate unit without proper use of kill switch.



PRECAUTIONS BEFORE STARTING THE ENGINE

- Check that the engine is placed on a level surface to ensure correct readings.
- Before starting a new engine, make sure that the engine oil and transmission oil are filled to the correct level. The correct engine oil must be used for the engine. When checking the oil level with the dipstick, turn the dipstick fully closed in order to get the correct reading. Never mix different types of oils, since mixing may cause the oil to settle in the engine. This causes engine damage. Using wrong oil voids warranty.
- Check that the fuel tank is refueled. Fill the engine fuel tank with E98 octane or higher quality. Do not fill the tank to the brim, otherwise fuel will spill over during use and transportation. Fill the tank to the mark shown in the tank.
- The vehicle should only be operated in the correct temperatures (see technical data). In cold conditions, the electric start may not supply high enough speed to start the engine. When this is the case, start the engine using a starting rope.
- If you notice a fault or damage to the engine. Do not use the vehicle. Contact your authorized dealer.
- Always start the engine without the chain and with the chain cover on before operating the unit.

STARTING AND STOPPING THE ENGINE

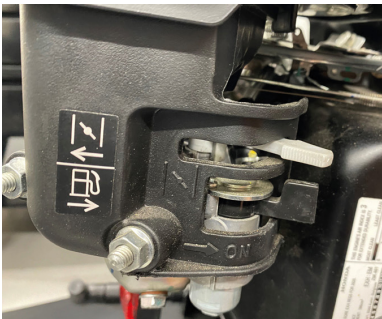
Always attach the kill switch tether to your clothing before starting the unit. Check that the hydraulic brake is correctly installed in the brake position near the engine sprocket. Check that the hydraulic fluid is in correct level and that the brake is functioning correctly.

Check the throttle and brake lever operation. Make sure that they both move freely and that they return to right position. **Never start the engine if the throttle and brake levers do not work properly!** Always clean any ice or snow from the engine before starting.

Check that the brakes work while operating the vehicle in slow speed. If the throttle lever is damaged in the wrong position, it can cause the vehicle to suddenly surge forward after starting the engine – always start the engine without the chain and chain cover installed. For example, the throttle lever may be frozen and cause the unit to start moving without operating the throttle lever.

If the linkage does not work properly, the engine should be warmed up and allowed to dry. Do not use the vehicle if you suspect damage to throttle or brake system. Contact your local authorized dealer.

Open the fuel tap and, if necessary, switch the choke on. In the electric start version, apply the brake at the same time as starting the device with the key. In the case of a non-electric starter, pull the start lever while applying the brake. Allow the appliance to warm up for a while and then close the choke. To start, press the lever. Braking is done by pulling the brake lever. The brake can be locked to parking brake by adding a rubber strap on end of the brake.



NOTE

Prolonged engine idling (<15 minutes) should be avoided.

NOTE

If water gets into the fuel tank, it will cause malfunctions and may freeze in the carburetor, which prevents the engine from starting.

NOTE

The choke must be turned off immediately after starting, since driving while the choke is on will result in high fuel consumption. This will also foul the spark plug.

NOTE

If the engine starts to smoke and feels inefficient - clean the engine air filter.

NOTE

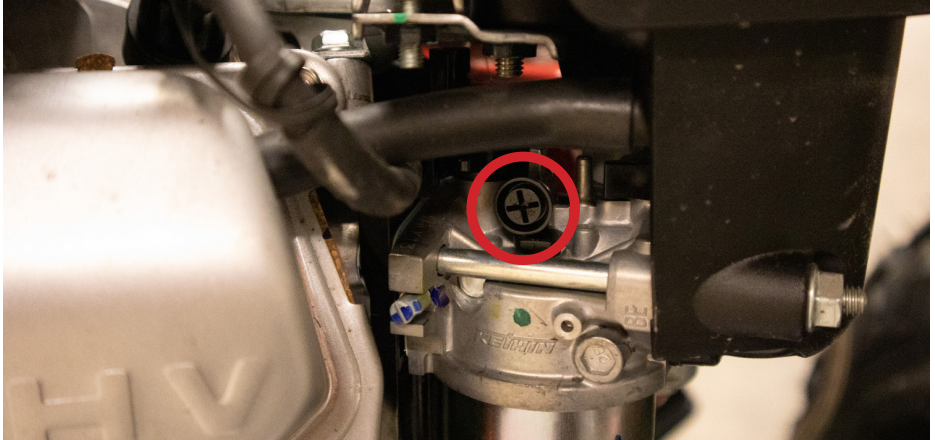
To turn off the engine: remove the kill switch tether, press the kill switch, or turn the key to turn off the engine. You can also shut down the engine by pressing the middle button on the switch board. When the engine is switched off, the fuel tap must be closed.

NOTE

Disconnect the battery quick connector if the vehicle is turned off for over 2 hours.

STARTING A NEW ENGINE

- A new engine must be run in. This ensures the engine a long lifespan.
- When running in a new engine, you must avoid driving on higher RPM.
- When running in a new engine, you must use at least 2 tanks of fuel.
- The engine idle can be adjusted from the black Phillips screw, which is located in the carburetor.



STORING THE UNIT

Disassembly takes place in reverse order.

Remember that the engine and battery must be kept upright at all times.

NOTICE

Engine might be hot after use.

DRIVING AND OPERATING A VAE LLAN VEHICLE

Check the following before operating a Vaellan vehicle:

- Parts are secured into place
- Lights work properly
- Condition of the reflectors
- Brakes
- Parking brake
- Motor kill switch (the motor should stop when the clip is pulled off)
- Steering (turn the steering to its extreme positions)
- Skis/Wheels are locked into place

Always turn on the lights while operating a Vaellan vehicle to ensure you are noticed. The light switch can be found on the handlebar. The switch also includes the horn and main power switch.

Take a comfortable position on the seat, hold on to the handlebars, and place your feet on to the footrests on the front frame. Slowly press on the throttle to start moving. You can stop the vehicle by releasing the throttle or by pressing the brake.

For safety reasons, do not use any third-party accessories or parts other than those approved by Vaellan.



OPERATING IN EXTREME CONDITIONS AND TOWING

If the vehicle sinks into deep snow, remove the wet snow between the track and the rest of the vehicle immediately. Do not push the Vaellan vehicle from the handlebars (as this will cause damage to the handlebar).

If snow gets stuck between the starter rope and the starter rope is frozen, do not try to force the rope or it may break. Remove the starter rope housing and clean the rope. Always use the electric start first.

If the vehicle cannot be started or cannot be driven, tow the vehicle at a maximum speed of 5 km/h (3.1 mph).

FOLLOW THESE STEPS FOR TOWING

1. Remove the chain from the motor.
2. If towing a Vaellan Wheeler, switch gear to neutral.
3. Use the front grab for towing.
4. Pull the vehicle forward.

SELECTING THE MAXIMUM SPEED BY CHANGING GEARS

You can change the maximum speed of your Vaellan vehicle by changing the engine sprocket.

Vehicles are equipped with 14-teeth sprocket. You are able to purchase a 16- and 12-teeth sprocket. The 16-teeth sprocket is used when driving on icy surfaces, frozen lakes, or hard snow. The 12-teeth sprocket is used when towing or driving outside the trails.

CHANGING THE SPROCKET

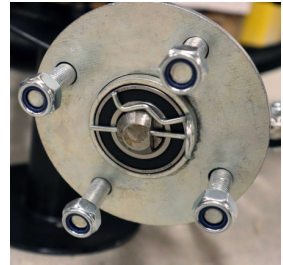
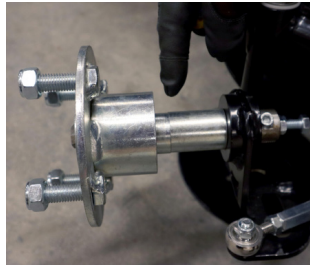
1. Make sure the engine is switched off.
2. Remove the chain from the engine.
3. Remove the bolt that holds the sprocket on the engine shaft.
4. Pull on the sprocket to remove it.
5. Position the new sprocket so that the sprocket teeth are furthest from the engine.
6. Check that the key remains in the key groove (some versions have an accessory sprocket spacer).
7. Place the sprocket mounting bolt at the end of the axle.
8. Add locktite and tighten the bolt.

WHEELER OPTIONS AND COMBINATIONS

Wheels can be used instead of skis when there is little snow or when driving without a snow cover. The wheels are installed in the same place as the skis and locked into place with a pin. The Vaellan rear axle and tracks have the same mounting points. When mounting a Wheeler back axle, place the crossbar between the seat frame. Next, connect the gear switcher to the right side of the seat frame.

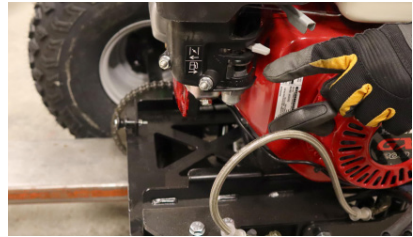
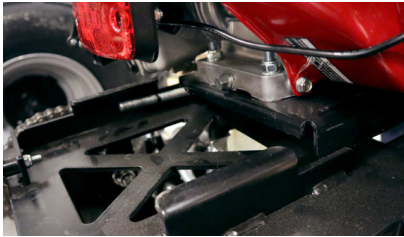
FITTING WHEELS

1. Remove the skis.
2. Place the wheel axle through the ski and tire mounting hole. Slide the axle from inside to out.
3. Place both spacers on the axle. Spacers must always be in place when driving. The axle width can be adjusted by removing spacers during transport. In this case, the Wheeler fits into narrow trailers.
4. Place the wheel hubs on the axle.
5. Place the wheel on the wheel hub. Check the direction of the rotation on tire and tighten the nuts. Note wheels valve is pointing outwards. Lock the wheel on its place with pin.
6. First install the engine and the battery in the battery holder. When installing the engine, make sure that the rear axle is properly supported to prevent falling. After this the rear axle is attached to the same attachment points as the track. After attaching the rear axle, the gear selector is mounted to right side under the seat (seat frame fixing bolts).
7. Disassembly takes place in reverse order.

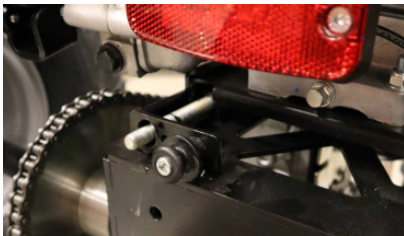


FITTING REAR AXLE

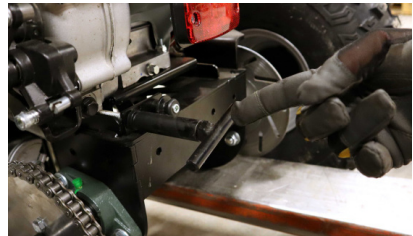
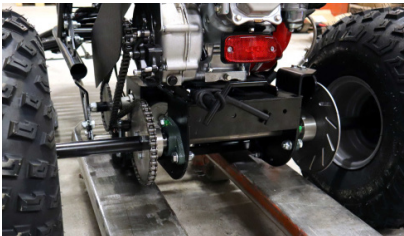
1. Place the engine on the rear axle's engine bed.



2. Slide the engine until the threaded rod comes out of the engine beds hole.



3. Place the chains on the sprockets and tighten the engines T-handle. Lock the T-handle into place with a rubber strap. The free length of the chains should have 15mm clearance.



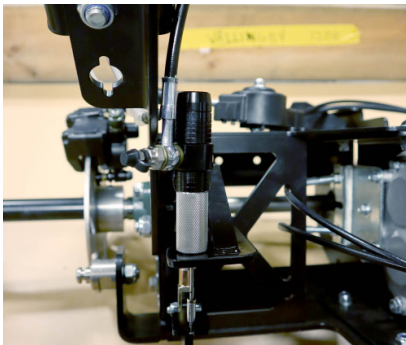
4. Adjusting the gear box chain tension. The chain tension can be adjusted with the chain tension roller.
5. Loosen the the chain tension rollers bolt. Chain tension is adjusted by the height of the roller.



6. Remove the swing limiter bracket from the mid frame. Place the Wheelers cross bar between the mid frames brackets. Tighten the bolts and nuts.
7. When viewed from the rear, the bolts on the right side of the cross bar is assembled from inside to out.
11. Attach the mid frame to the rear axle. Place the locking levers of the midframe to the mounting pins of the rear axle.
12. Attach the rear axle to the cross bar with a bolt and nut.
13. Attach the gear lever between the mid frame and seat frame. Note, the bottom hole remains.



14. Bring the brake cylinder to the Wheelers brake arm.
15. Make sure the cylinders needle snaps into its groove.



16. Always check the operation of the brakes before setting off.
17. Adjust the braking force by screwing aluminum adjusting nut.

ATTENTION

Remember to screw in the locking bolts before operating.

ATTENTION

New chain may stretch during the first few uses. Check the chain tension before operating.

MAINTENANCE

Perform the following steps daily:

- Check for any oil or fuel leaks. Add oil and fuel if needed.
- Check the oil level in the engine and gearbox.
- Check the chain tension.

Perform the following steps after every 10 hours of operation:

- Lubricate the chain with chain spray (Please note that the chain and sprocket wear out faster if lubrication is not done).
- Check the tightness of the screw connections.

Perform the following steps after every 50 hours of operation:

- Check the condition of the brake pads, replace when necessary.
- Check tire pressures.
- Check track tension, tighten when necessary.
- Check the chain alignment when the chain is tightened. If necessary, adjust by loosening the engine mounting bolts and turning the engine. Then tighten the bolts.

Track tension adjustment

- Loosen the bolts on the rear axle bearing brackets.
- Move the axle backwards until the track is not touching the frame.
- Check the distance between the ends of the drive shaft and the folding roller shaft on both the left and right (the difference must not exceed 2 mm).
- Check and tighten the bearing bracket bolts when necessary.

MAINTENANCE MEASURES TO BE TAKEN AT THE END OF THE DRIVING PERIOD

- Wash and dry the vehicle.
- If the paint has worn at some points, sand and repaint the damaged areas. Get the correct shade from your local authorized dealer.
- Check rollers and bearings on track and tires, replace if necessary.
- Service the engine. Adjust valve clearances and plug. Change oils in engine and transmission.
- It is advisable to have the engine serviced annually by an authorized service center.
- If you do the annual maintenance yourself, collect the drained oil and take it to a hazardous waste collection point. Oil is harmful to nature and should not be allowed to enter the environment.
- The vehicle must be protected from the rain. Always store in a dry place with effective ventilation (due to possible fuel vapor).
- If the vehicle is not used for a long time, charge the battery with the optional maintenance charger every three months.
- It is advisable to fill the fuel tank with alkylate petrol and then run the engine for a few minutes.
- Normal gasoline will not remain good when unused in the engine for a long time. It may cause running problems or prevent the engine from starting.

TECHNICAL DATA

Main dimensions, length/width/
height

Skis: Snow: 2100mm, **Snow+:** 2500mm/1000mm/1100mm

Front wheels: 1800mm/1180mm/1100mm

Wheeler: 1700mm/1260mm/1100mm

Dryweight (no options)	Snow: 109kg Snow+: 114kg Wheeler: 128kg
Tire pressure	0,3bar
Trailer tire pressure	2bar
Maximum load	Snow: 159kg, Snow+: 154kg, max towing capacity 110kg
Intended use	Light multipurpose vehicle for snow to off-road usage.
Operating angle	Max operating slope 20 degrees
Operating temperature	+40°C – (-15°C)
Highest operating altitude	1500m
Top speed, slow transmission selected	15km/h or 9 mph
Top speed, fast transmission selected (optional)	20km/h or 12 mph
Engine	Honda GX200
Plug tip spacing	0,8mm
Valve clearances when cold	Intake valve 0,15+-0,02mm, exhaust valve 0,20+-0,02mm
kW (hp) / RPM	4,3 (5,8) / 3600
Fuel	E98, Fuel tank 3,1l
Fuel consumption / (max)	<1l/h (1,7l/h max)
Transmission	Centrifugal clutch and chain
Noise level	<70dB(A)
Frame	Skis and tracks or 4-wheels or tracks and 2 wheels front
Suspension	Front springs and swing frame in the track
Engine oil	0,6l APISJ-SAE 10W-30 or 0W-40 (do not use over +15°C)
Transmission oil	0,5l APISJ-SAE 10W-30 or 0W-40 (do no use over +15°C)

WARRANTY

The manufacturer strives for continuous quality improvement in design and production. These guarantees quality products for end users.

Vaellan Vehicles offers a limited warranty on all new vehicles sold to the original purchaser for a period of one year from the date of the purchase. This warranty covers defects in materials and workmanship related to non-wearable parts.

This warranty does not cover damage resulting from misuse, neglect, accidents, or any other external causes. It also does not cover wear and tear on parts that will wear out over time, such as tires, brakes, or battery. This warranty does not cover travel, hourly costs or freight costs related to maintenance. Warranty only includes parts.

To be eligible for warranty coverage, the vehicle must be used for its intended purpose and in accordance with all applicable laws, regulations, and operating instructions. Any modifications or alterations to the vehicle may void the warranty.

This warranty is non-transferable and applies only to the original purchaser. Vaellan Vehicle reserves the right to make changes or improvements to its products without obligation to install such changes or improvements on previously sold vehicles.

Service must be performed by a manufacturer-authorized service center in accordance with the service schedule. The manufacturer is not responsible for travel or installation costs incurred or any other third-party costs.

NOTICE The warranty only covers the parts covered by the warranty but not their installation or shipping. This warranty does not cover parts that have been damaged by improper stacking, neglect of maintenance, misuse, negligence, or self-inflicted accident.

WHAT THIS WARRANTY DOES NOT COVER

Damage or failure caused by neglect of service, misuse of the device, negligence, use contrary to the manual, modifications to the device, accidents or if the device has been used with non-original parts. The warranty also does not cover damage caused by renting, borrowing, driving on snow-free hard ground with a track or skis, or damage caused by hitting a rock, stump, or other hard object. The warranty also does not cover defects caused by competitive use. This warranty does not cover parts that wear out during normal use, such as a spark plug, chain, track, or tires. The warranty also does not cover indirect costs or the costs of delivering the unit or part of the device for service. The warranty also does not cover the cost of shipping and packing parts when shipping parts to the customer. The warranty is only valid for the first owner who is marked as a buyer.



DISPOSAL OF THE PRODUCT

The product should be disposed of in accordance with local requirements.

The engine contains oil that is dangerous to nature. The battery contains dangerous acids. Ask your local recycling center for disposal instructions.

EU DECLARATION OF CONFORMITY

Manufacturer: Vaellan Oy, Naattiantie 1A, 40520 Jyväskylä

Brand: Vaellan

Model: Vaellan

We declare that the device meets the requirements of the following directives: 2006/42 / EC, 2004/108 / EC, 97/68 / EC, 2001/95 / EC and complies with the following harmonized standards: EN ISO 12100-2010.

In Jyväskylä on 15 January 2021.

Tatu Virtanen

Head of R&D, Mother and Father of Vaellan products
Vaellan Oy



Vaellan Oy
Naattiantie 1A
40520 Jyväskylä
FINLAND